

Pandora Firmware Upgrade

Important before your upgrade

- You need to record the compensation factor of your Pandora
 - Turn right the joystick and long press the “START/STOP” button to power on the Pandora, then you will see the “OSC: xxx” in the screen, just record the value, it could be “+xxx” or “-xxx”
 - Write down this numbers on you paper in case you forget it 😊😊😊
- Worse case if you forget to record the numbers
 - Don’t worry, just open your Pandora case, the numbers is right on the back of the LCD

The software / hardware you need

- A windows PC
- STM DfuSe Tool , and install the STM Dfu driver correctly. You can find the tool as bellow weblink:

http://www.st.com/content/st_com/en/products/development-tools/software-development-tools/stm32-software-development-tools/stm32-programmers/stsw-stm32080.html

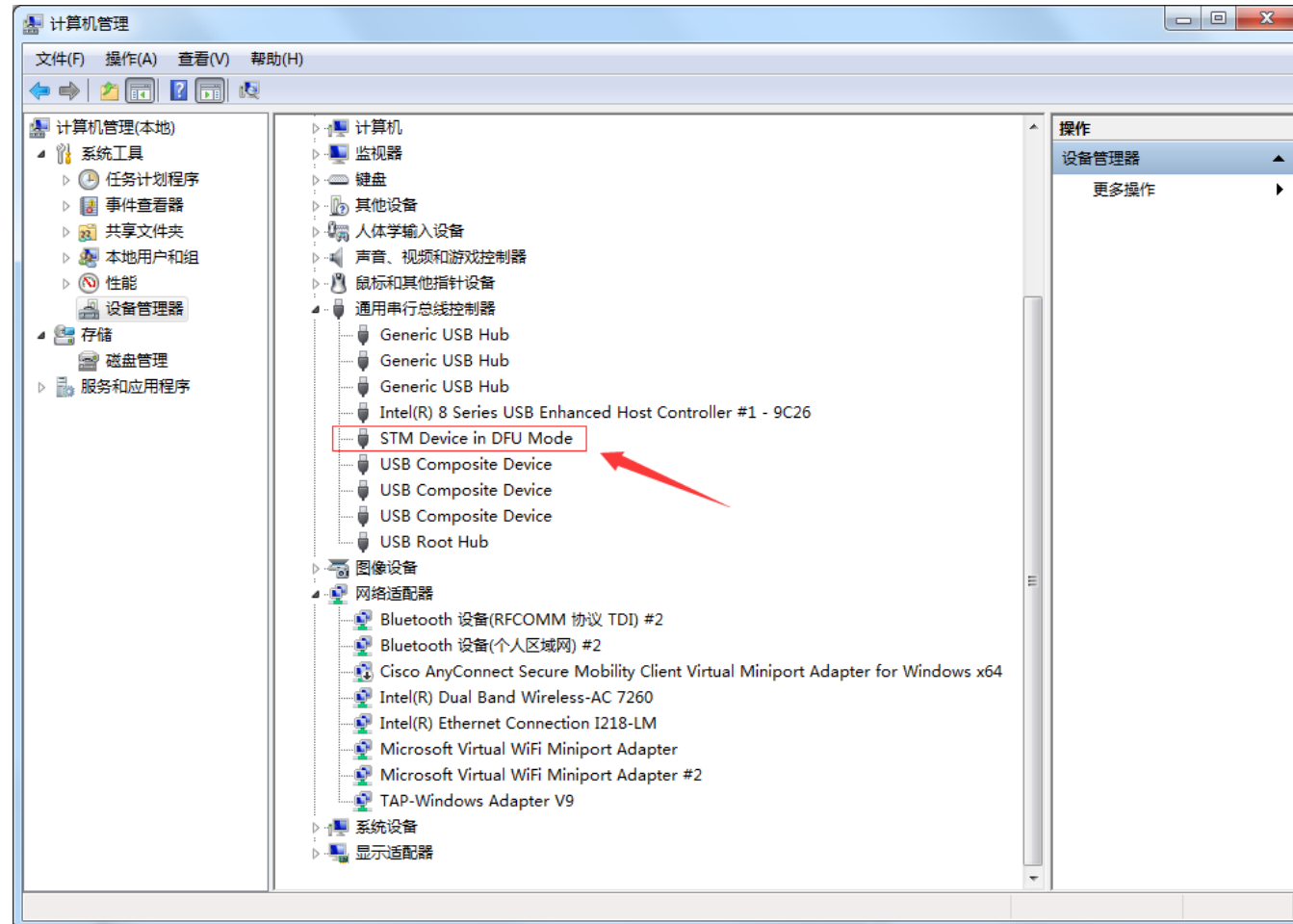
- An micro USB cable

Upgrade procedure

- Press and hold the Joystick switch, then press the START/STOP button, you could see the “Program Update.....” on the screen. Now the Pandora is ready for firmware upgrade
- Plug the micro USB cable into the Pandora and then plug the USB into the PC
- Check the driver and connectivity in the windows

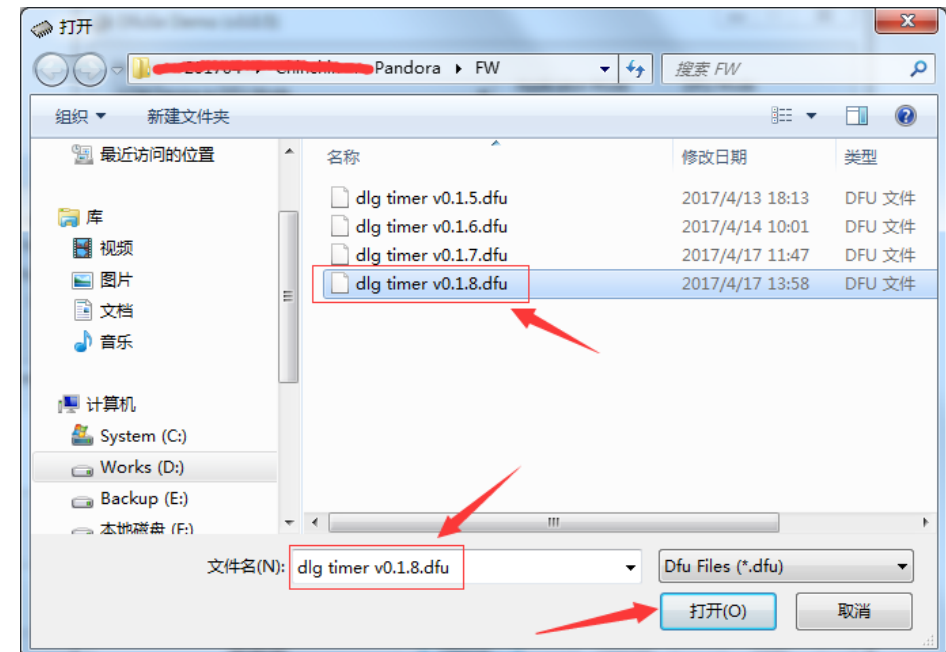
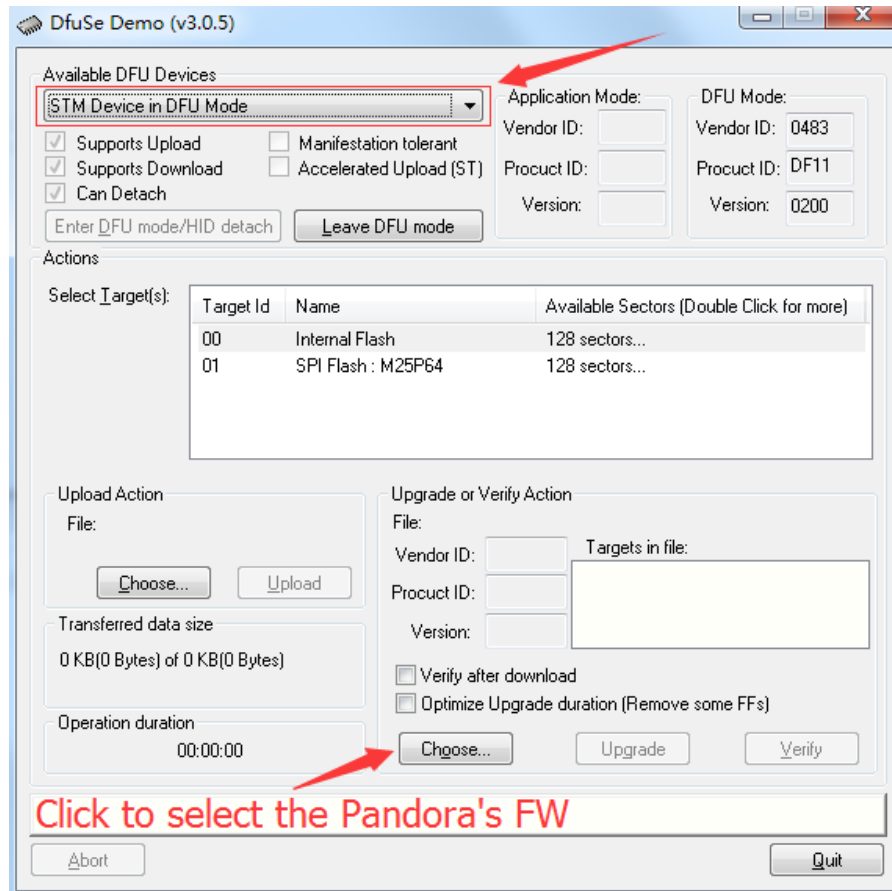
Should see the STM Dfu device

- STM Dfu Device



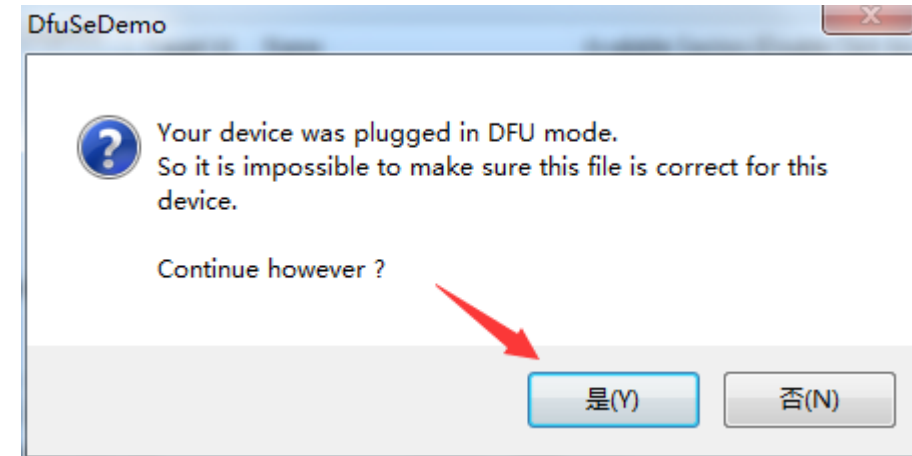
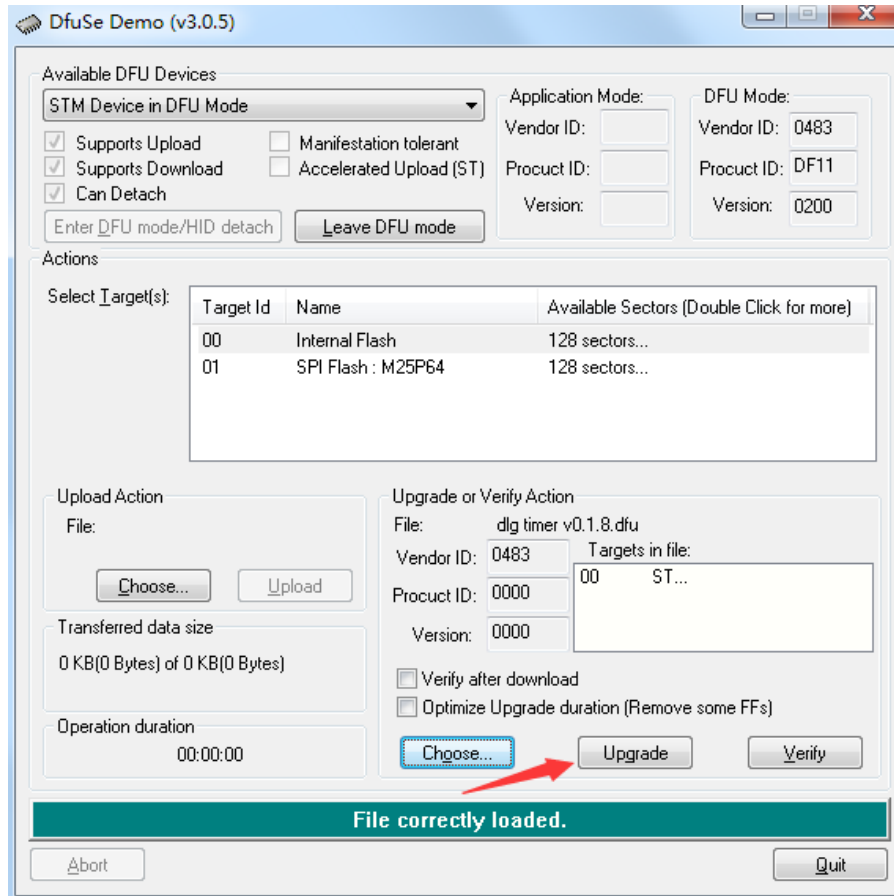
Run the STM DfuSe

- Click “Choose” and then select the Pandora firmware you got.



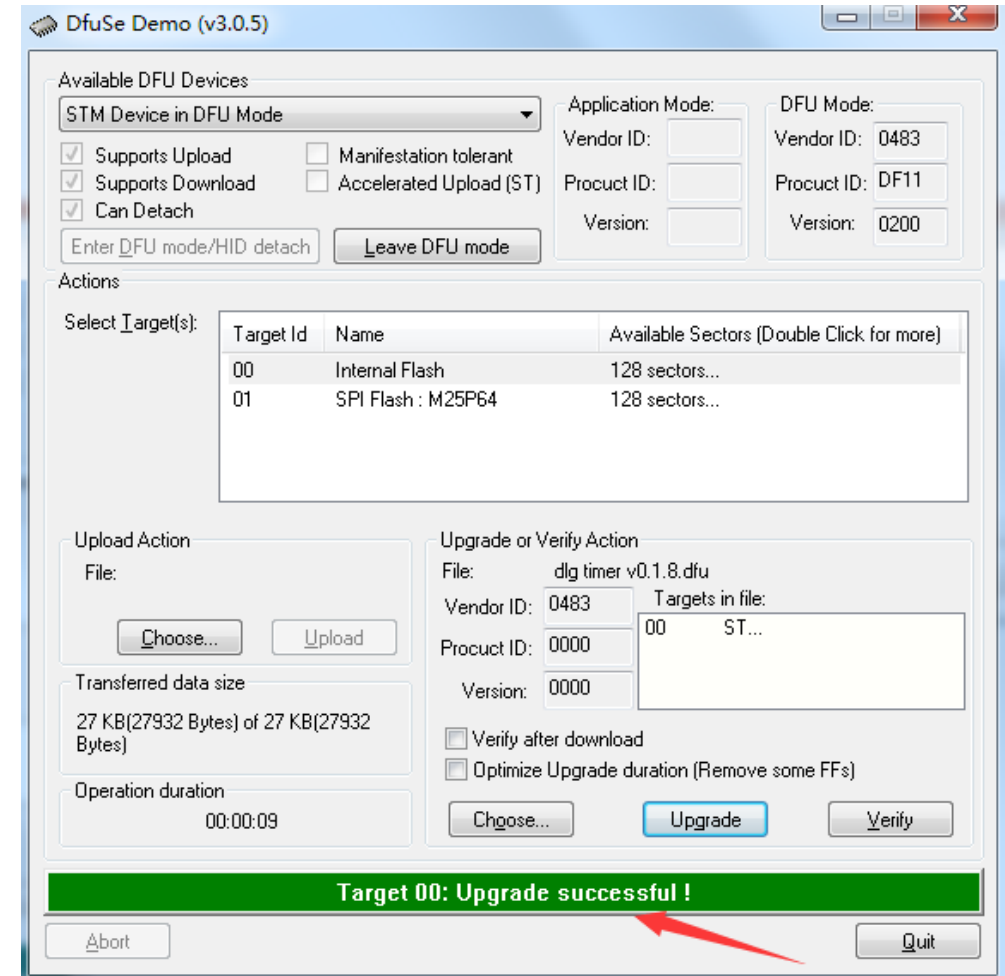
Upgrade operation

- Click “Upgrade” and then “Yes”



Done

- Upgrade successful and Quit
- Press the START/STOP button of Pandora to switch off
- Long press the START/STOP button and enjoy the new firmware



Important after your upgrade

- You need to set the compensation factor back to your Pandora
 - Turn right the joystick and long press the “START/STOP” button to power on the Pandora, then you will see the “OSC: 0” in the screen, just short press the joystick and then you will see the number with underline, now you can use joystick to set the value back.
 - Short press the joystick again when the numbers set, and the numbers now without underline.
 - Press the “START/STOP” button to power off.
- Worse case if you forget the compensation factor
 - Don’t worry, just open your Pandora case, the numbers is right on the back of the LCD